

# Free Antibody

**\$150**  
Value


## Key Feature:

- Monoclonal antibodies
- Widely cited by researchers
- Validated in many applications
- Key targets for cancer research

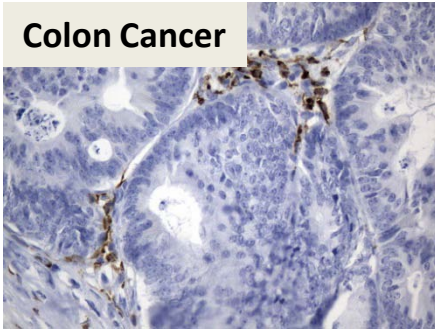
Submit your request online for the free sample!

[www.origene.com/freesample](http://www.origene.com/freesample)

## The FREE antibodies include:

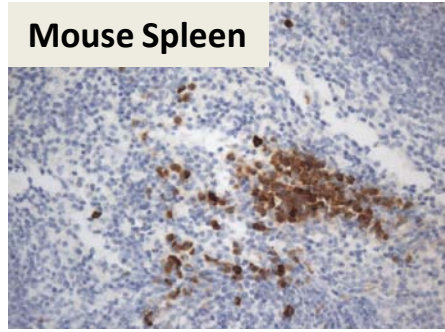
Protein Name	Host	Validated Application	SKU
CTLA4	Mouse	IHC	UM870141
 PD-L1	Rabbit	IHC (human & mouse)	TA591004S
PD1	Mouse	WB, FC, Neutralization	UM870114
VISTA	Mouse	FC	TA812251S
LGR5	Mouse	WB, IHC, IF, IP, FC	TA503316S
CD163	Mouse	WB, IHC, IF	TA506380S
SOX17	Mouse	WB, IF, FC	TA500044S
KI67	Mouse	IHC, FC	TA801577S
ALK	Mouse	WB, IHC, LMNX	TA801287S
CD80	Mouse	WB, IHC, IF	TA501576S

# Featured Data



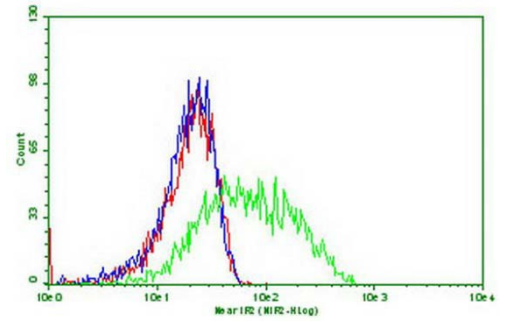
**Colon Cancer**

**CTLA4 antibody (UM870141)**  
IHC staining of human colon cancer tissue

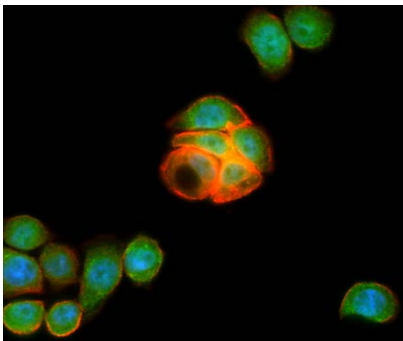


**Mouse Spleen**

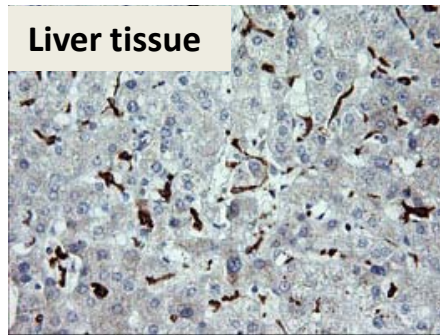
**PD-L1 antibody (TA591004S),**  
React with both human and mouse PD-L1.



**PD1 antibody (UM870114),**  
Neutralization assay with PDL1 stable cells: PD1 Ab (blue) or PD1-Fc protein (green) or both (red).

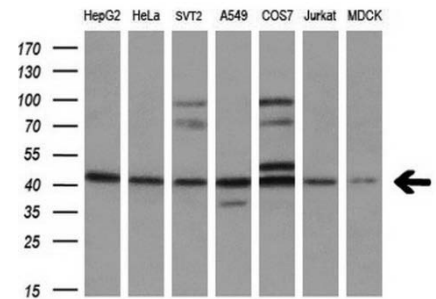


**LGR5 antibody (TA503316S),**  
IF staining of HT29 cells: LGR5 (green). Actin (red), nuclear (blue).

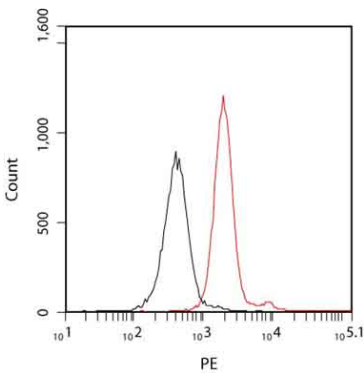


**Liver tissue**

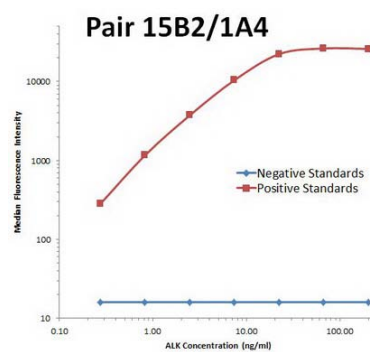
**CD163 antibody (TA506380S)**  
IHC staining of Human liver tissue



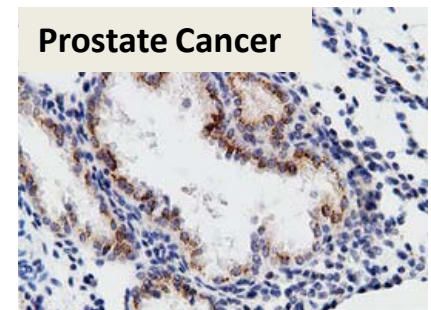
**SOX17 antibody (TA500044S)**  
WB analysis of extracts from 7 different cell lines



**Ki67 antibody (TA801577S),**  
FC analysis of Jurkat cells (red)



**ALK antibody (TA801287S),**  
Detection ab in Luminex assay



**Prostate Cancer**

**CD80 antibody (TA501576S),**  
IHC staining of FFPE tissue